

4E SERIES



4070E 2WD - 4080E 2WD
4070E - 4080E - 4090E - 4100E





THE NEW 4E SERIES. COMPACT FORMAT MEETS GREAT INNOVATION.

TECHNICAL DATA		4E SERIES			
		4070E	4080E	4090E	4100E
ENGINE		FARMotion	FARMotion	FARMotion	FARMotion
Emission stage		III B	III B	III B	III B
Cylinders / displacement	No. / cm³	3 / 2,887	3 / 2,887	3 / 2,887	3 / 2,887
Maximum power (ECE R120)	kW / h.p.	48 / 65	55.4 / 75	65 / 88	71 / 97
Power at rated engine speed (ECE R120)	kW / h.p.	48 / 65	55.4 / 75	61.6 / 84	67.3 / 92
Lifting capacity of the rear power lift (std./opt.)	kg	2,500 / 3,500	2,500 / 3,500	2,500 / 3,500	2,500 / 3,500
Wheelbase (2WD / 4WD)	mm	2,166 / 2,100	2,166 / 2,100	- / 2,100	- / 2,100
Kerb weight (2WD / 4WD)	kg	2,800 / 3,000	2,800 / 3,000	- / 3,000	- / 3,000

Farmyard, barn and light field work – the new 4E Series is the ideal tractor for smaller farms and private operations as well as local authorities and horticulture companies. There are six models to choose from – available in both 2 and 4 wheel drive, ranging from 65 h.p. (48 kW) to 97 h.p. (71 kW). You are certain to find the perfect utility tractor for your work profile here. The robust one-piece bonnet with its modern design made from high-quality steel makes it clear at first glance that this utility tractor is offering innovative technology in a compact format. The new three-cylinder FARMotion engines are extremely powerful, reliable and economical. Four transmission options are available: two for 30 km/h and two for 40 km/h. DEUTZ-FAHR has developed the front axles specifically for the utility class. 55° steering angle, differen-

tial locks and four-wheel drive with mechanical or electro-hydraulic activation, four-wheel brakes – the new 4E Series is both agile and stable in any situation. The attachment points offer outstanding versatility. Options include a lifting capacity of up to 3,500 kg, hydraulic pumps for 42 l/min or 50 l/min, up to three control units at the rear and four PTO configurations. The driver's platform meets the highest standard of comfort. The controls have been laid out using the latest findings from ergonomic research. The new dashboard provides clear information about all the operating conditions. The steering wheel and driver's seat are adjustable. The footwell offers plenty of space. With the new 4E Series, DEUTZ-FAHR is proving once again just how comfortable and versatile a utility tractor can be.

NATURE, PEOPLE AND TECHNOLOGY IN
PERFECT HARMONY. IT FEELS SIMPLY GREAT
WHEN YOU CAN RELY ON YOUR EQUIP-
MENT. WELCOME TO THE NEW 4E SERIES.



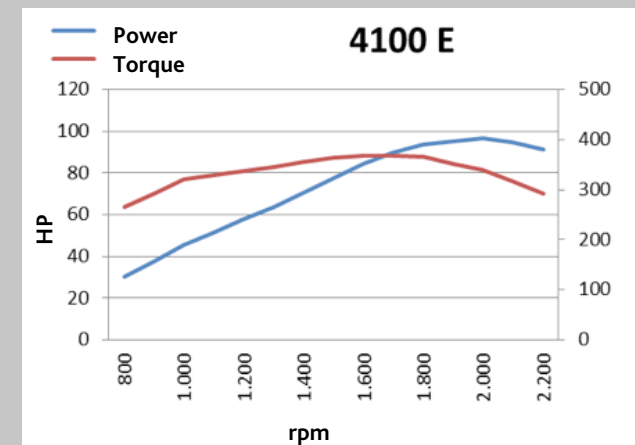


Highlights:

- Engines specifically developed for farming.
- New extremely compact cooling system.
- Two-stage PowerCore air filter.

Hard at work under the newly designed bonnet are the extremely compact FARMotion three-cylinder engines (emission stage III B). Especially developed for agricultural applications, these common rail engines feature electronic injection, optimised capacity, an exhaust gas recirculation (EGR) system and a diesel oxidation catalyst (DOC) system and supply maximum power and constant torque even at low engine speeds. FARMotion engines are extremely efficient operating with extremely low consumption and emissions, with minimal vibrations and noise levels. Other new features include the compact cooling system with an enlarged cooling surface, inter-cooler, a fuel cooling system, optimised air flow with viscous fan, and the two-stage PowerCore air filter with dust ejector. Both systems support engine efficiency and are designed for long maintenance intervals as well as fast and straightforward service work. With FARMotion engines, DEUTZ-FAHR is proving once again just how powerful and efficient a compact utility model can be.

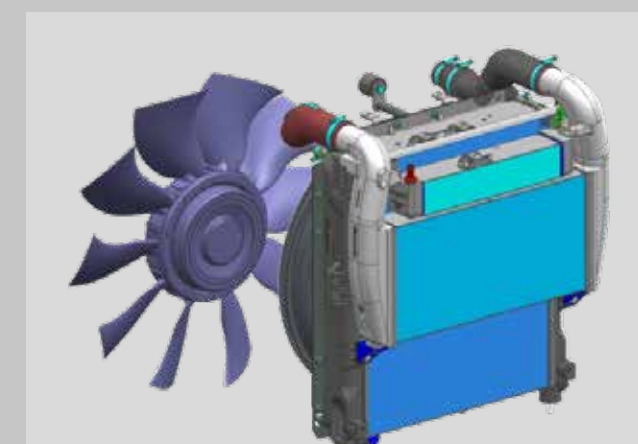
FARMOTION ENGINE. COMPACT FORMAT MEETS GREAT POWER.



Maximum power and constant torque even in a low engine speed range.



Electronic engine speed settings. Excellent comfort during day-to-day routine work.



New: cooling system with enlarged cooling surface and viscous fan.



New: low-maintenance, two-stage PowerCore air filter with dust ejector.

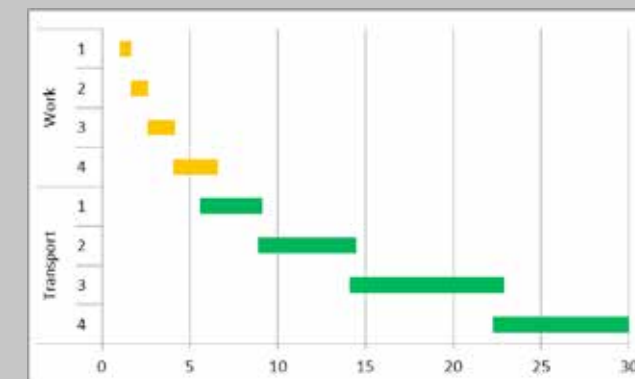


Highlights:

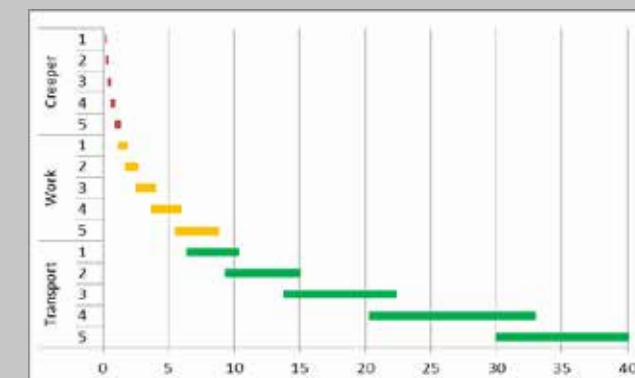
- Four transmission variants to choose from.
- 30 km/h or 40 km/h.
- ECO speed at reduced engine rpm.
- Optimised gear shifting.

TRANSMISSION EQUIPMENT. COMPACT FORMAT MEETS GREAT PRECISION.

The right transmission for any operating profile and the right speed for any work – you can meet any challenge with the new 4E Series. Highly efficient with maximum precision – the choice is yours. There are four mechanical transmission variants available. A simple 12+3 speed transmission with creeper gear for speeds of 832 m/h to 30 km/h. A fully synchronised ECO shuttle transmission for speeds of 1.6 km/h to



Finely graduated speed ranges from 8+8 speeds ...



... to 15+15 speeds with creeper gear and ECO.



The choice is yours: 30 km/h or 40 km/h final speed.

30 km/h, where the final speed is reached at just 1,800 rpm, which saves fuel and reduces noise. A 15+15 shuttle transmission with creeper gear for speeds of 298 m/h to 40 km/h and a 15+15-speed ECO version achieving full road speed at just 1,800 rpm. With the new 4E Series, DEUTZ-FAHR is proving once again just how precise and efficient a compact utility model can be.



Highlights:

- Maximum manoeuvrability.
- New: electro-hydraulic activation of the four-wheel drive and differential lock (40 km/h models).
- Four-wheel brake with variable braking effect (40 km/h models).

COMPACT FORMAT MEETS GREAT MANOEUVRABILITY AND SAFETY.

The range of applications for utility tractors is broad but the space in which they are used tends to be tight. It is also important that the machine maintains its grip on all ground conditions and can be reliably controlled in any situation. To guarantee this, DEUTZ-FAHR has developed a rather special front axle for the utility class. In combination with the compact bonnet, it enables a steering angle of up to 55° (50° for models with 2 wheel drive) – this level of manoeuvrability is unrivalled. Depending on the transmission version, the differential lock and the four-wheel drive are activated mechanically (30 km/h models) or electro-hydraulically (40 km/h models). Maximum traction is ensured in all conditions. The four-wheel drive models feature two steering cylinders and a four-wheel braking, including wet disc brakes. Depending on the situation, either all four wheels, or the two left or right wheels, or – with the changeover valve – the right or left rear wheel can be individually braked. This provides maximum safety: no matter who, no matter where and no matter what. With the new 4E Series, DEUTZ-FAHR is proving once again just how manoeuvrable and safe a compact utility model can be.



The compact bonnet allows a steering angle of up to 55°.



Option of mechanical or electro-hydraulic activation of the four-wheel drive and differential lock.



Four-wheel braking with wet disc brakes.

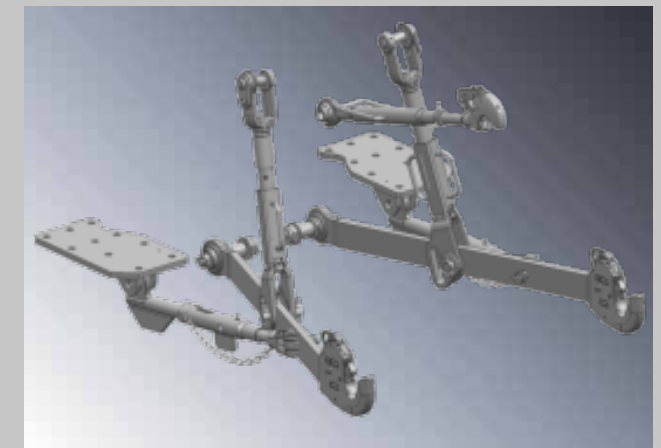


Mechanical parking brake installed beside the driver's seat within easy reach.



Highlights:

- 3,500 kg lifting capacity.
- 42 l/min or 50 l/min hydraulic flow.
- Four PTO options.



Rear power lift with category II quick couplers and 3,500 kg lifting capacity.



Up to three mechanical control units in the rear.



PTO: 540 or 540/540ECO or 540/540ECO/1000 or 540/540ECO plus ground-speed PTO can be selected.

HYDRAULIC AND REAR LINKAGE WORK. COMPACT FORMAT MEETS GREAT VERSATILITY.

Farmyard and barn work, loader and transport applications, field work and much more – the tasks of a utility tractor are extremely varied. When it comes to the attachment points of the new 4E Series, nothing is impossible. As always with DEUTZ-FAHR, the mechanical rear power lift is extremely accurate and offers sensitive control. This increases the operating speed significantly, for example in headlands in the field. It can lift up to 3,500 kg. The category II three-point linkage is available with ball ends or catch hooks on the upper and lower link arms and mechanical stabilisers. This means that powerful attachments can also be used. For the hydraulic equipment, there is a choice between 42 l/min or 50 l/min open centre pumps for one to three control units in the rear. The steering is operated by

an independent pump in both versions. This means that the full hydraulic power is always available for the attachments. The new 4E Series also offers a variety of options for the PTO equipment. There are four configurations to choose from: 540 or 540/540ECO or 540/540ECO/1000 or 540/540ECO plus ground-speed PTO. The PTO is activated mechanically, which ensures a smooth start. The PTO mode for when the vehicle is stationary is a new feature. If the PTO should continue to run when the driver leaves the tractor, the driver must confirm this by pressing a button. If the button is not pressed, the engine is switched off after seven seconds – safety first. With the attachment points, DEUTZ-FAHR is proving once again just how versatile a compact utility model can be.

THE DRIVER'S PLATFORM. COMPACT FORMAT MEETS GREAT COMFORT.

Highlights:

- Redesigned driver's platform.
- Rearranged controls
- New information display on the dashboard
- More space for the driver

DEUTZ-FAHR always puts the focus on the driver prioritising safety and comfort. The steering wheel and comfort seat are individually adjustable. There is plenty of space to allow the driver to move freely, in particular in the footwell. Steps and handholds on both sides of the tractor make it extremely easy to climb in and through. The controls have been rearranged, organised logically according to how often they are used and clearly identified with colour coding. The parking brake, PTO controls and four-wheel activation are located on the left side of the driver. On the right are the transmission and differential lock controls, the manual throttle, the engine speed settings, the rear power lift controls and the hydraulic control units. The new central information display on the dashboard provides the driver with clear information about the tractor's operating conditions, in digital and analogue form. The new 4E Series naturally offers an unobstructed view over all work areas. The driver can see everything, even in extreme situations. This not only makes the work more efficient, but also improves safety. The new foot mat made from insulating material enhances comfort, and minimises the amount of noise, vibration and heat to the driver. With the new 4E Series, DEUTZ-FAHR is proving once again just how comfortable a compact utility model can be.



The new information display gives the driver a clear view of all the operating conditions, in digital and analogue form.



Transmission controls, manual throttle, engine speed settings, rear power lift and hydraulic controls are within easy reach on the right of the driver.



Parking brake and PTO controls are within easy reach on the left.



All functions are clearly arranged to prioritise safety and comfort.



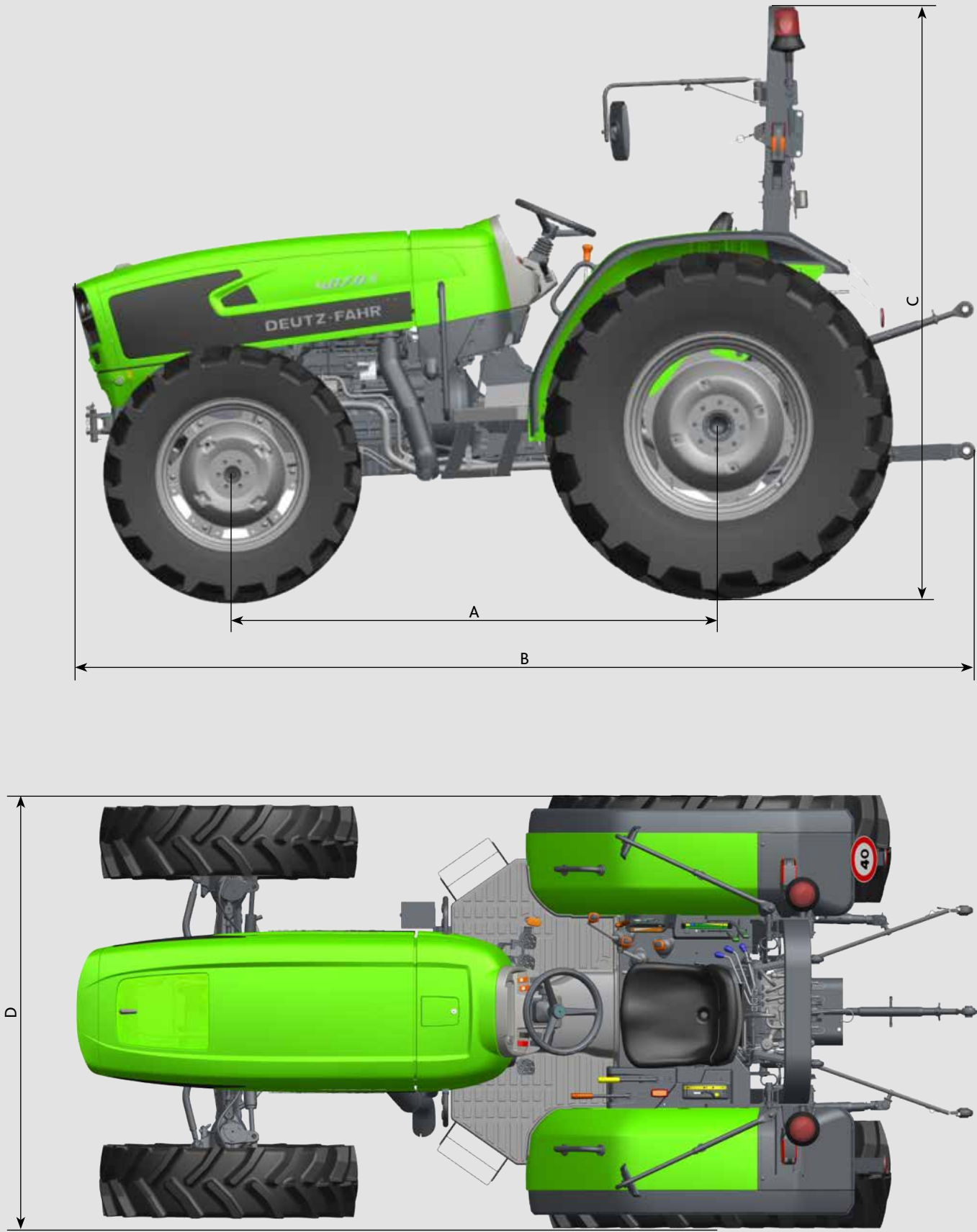
AFTER A LONG AND TOUGH DAY IN THE FIELD WITH THE NEW 4E SERIES, THE DRIVER WILL BE LOOKING FORWARD TO ONE THING: THE NEXT DAY OF WORK!

Technical data		4E SERIES			
		4070E	4080E	4090E	4100E
ENGINE					
Emission stage	Stage / Tier	Emission stage III B / Tier 4i			
Manufacturer		SDF			
Series		FARMotion			
Cylinders / displacement	No. / cm³	3 / 2,887			
Turbocharging with intercooling		●	●	●	●
Maximum power (ECE R120) at 2,000 rpm	kW / h.p.	48 / 65	55.4 / 75	65 / 88	71 / 97
Power at rated engine speed (ECE R120) at 2,200 rpm	kW / h.p.	48 / 65	55.4 / 75	61.6 / 84	67.3 / 92
Max. engine speed at 1,600 rpm	Nm	292	342	354	369
Torque increase	%	41%	43%	32%	27%
Electronic engine control		●	●	●	●
Fuel tank capacity	l	75			
SHUTTLE TRANSMISSION					
Shuttle transmission with mechanical synchronisation		●	●	●	●
MECHANICAL MANUAL TRANSMISSION					
4-speed transmission 12+3 with creeper gear (30 km/h)		●	●	-	-
4-speed transmission 8+8 ECO (30 km/h)		○	○	-	-
5-speed transmission 15+15 with creeper gear (40 km/h)		○	○	●	●
5-speed transmission 15+15 ECO with creeper gear (40 km/h)		-	-	○	○
REAR PTO					
Mechanical activation		●	●	●	●
PTO speed 540 rpm		●	●	-	-
PTO speeds 540/540ECO rpm		○	○	●	●
PTO speeds 540/540ECO/1,000 rpm		○	○	○	○
Ground-speed PTO		○	○	○	○
FRONT AND REAR AXLE					
Mechanical four-wheel activation		●	●	-	-
Mechanical differential lock		●	●	-	-
Electro-hydraulic four-wheel activation		○	○	●	●
Electro-hydraulic activation of the differential lock		○	○	●	●
BRAKES AND STEERING					
Mechanical parking brake		●	●	●	●
Hydraulic trailer brake		○	○	○	○
Steering with dedicated hydraulic pump		●	●	●	●
Steering lock angle		55°	55°	55°	55°
POWER LIFT					
Mechanical lifting gear control		●	●	●	●
Lifting capacity of the rear power lift	kg	2,500	2,500	2,500	2,500
Lifting capacity of the rear power lift with additional lifting cylinders	kg	3,500	3,500	3,500	3,500
HYDRAULICS SYSTEM					
Pump delivery rate (std)	l/min	42	42	50	50
Pump delivery rate (opt.)	l/min	50	50	-	-
Mechanical control units, rear	No.	1-3	1-3	1-3	1-3
PLATFORM					
Digital display		●	●	●	●
Telescopic steering column		○	○	○	○
Folding roll bar		●	●	●	●
DIMENSIONS AND WEIGHTS					
Front tyres		280/85 R20	320/85 R20	360/70 R20	360/70 R24
Rear tyres		380/85 R28	420/85 R28	420/70 R30	480/70 R30
Wheelbase (2WD / 4WD) (A)	mm	2,166 / 2,100	2,166 / 2,100	2,100	2,100
Max. length (B)	mm	3,860	3,860	3,860	3,860
Max. height at roll bar (C)	mm	2,448	2,473	2,473	2,498
Width (D)	mm	1,782	1,840	1,823	2,005
Kerb weight (2WD / 4WD)	kg	2,800 / 3,000	2,800 / 3,000	3,000	3,000
Permissible total weight (2WD / 4WD)	kg	3,800 / 5,050	3,800 / 5,050	5,050	5,050

●: standard ○: optional -: not available

*: Standard or optional depending on package

Technical data and pictures are indicative. Committed to delivering a product more and more in line with your needs, DEUTZ-FAHR reserves the right to update the specifications of its machines at any time without notice.




Your DEUTZ-FAHR sales partner

Marketing-Communication Service – Code 308.8104.3.4.1 - 3/2018

Clagreen

For further information, please contact your dealer or visit us online
at deutz-fahr.com.

DEUTZ-FAHR is a brand of  SDF

